

STUDY REGARDING THE ATTITUDE OF THE OWNERS OF INDIVIDUAL SUBSISTENCE OR SEMI-SUBSISTENCE FARMS ABOUT THE WAY OF FINANCING THE AGRICULTURE FROM TIMIS COUNTY

CLAUDIA SÎRBULESCU¹

¹ *Banat's University of Agricultural Sciences and Veterinary Medicine "King Michael I of Romania", Romania, e-mail: claudiasirbulescu@usab-tm.ro*

Abstract: *This paper presents the results of a questionnaire-based research, in which issues are highlighted: strengthening the farm and ensuring the development of a competitive and sustainable agriculture; familiarizing the vegetable sector farms and livestock farming with new methods to access these funds; the use of non-repayable financial support under conditions of maximum efficiency to ensure a better quality of life in rural areas and the multiplication of the number of jobs in these sectors; the arrangements for the allocation and granting funds for crop production and cattle-breeding.*

Key words: *agriculture, farms, farmers, funding sources.*

INTRODUCTION

Although agriculture Timis County lies in many respects than the average level of development of this branch in Romania, farmers are facing financial problems for the development of productive activities and investments, determined on the one hand of support to a very small degree of this sector from financial institutions and on the other side of late payments on subsidies, ie their size much smaller compared to the old EU member countries.

Reasons for choosing the study was determined that along with dedicated funding sources, particular importance in agriculture is the source of funding grants, awarded by public funds (national budget and / or the Community budget).

The research was based on a survey questionnaire and went through the following stages: investigation we formulated objectives; we set the sample; I drafted the questionnaire; I applied field surveys; I made a coding response; I created databases; I analyzed the data; I have drawn conclusions.

In the given, I left the assumptions: there is a huge number of small and very small holdings who own and operate small areas of land scattered in several plots that produce primarily for consumption and not enough investment opportunities; There are a relatively small number of farms that have a size of 10 ha and exploiting approx half the country's agricultural area.

The target group was made up of farmers who have applied for grants centers for Payments and Intervention Agency in Timis County.

The sample of 165 respondents (individual subsistence farms or semi-subsistence) and approximately 10% of the holdings listed in the register of farms in Timis County with areas between 1 and 10 ha in the Register farms in Timis County.

The choice of respondents was done ad hoc, but we took into account the share holdings of the 8 local offices of the Agency for Payments and Intervention Timis total holdings in the Register farms in the county, so we have introduced in the sample farms in all areas.

MATERIALS AND METHODS

The research was based on a questionnaire survey. The questionnaire survey is detached from other techniques in that in such research questions are asked about the study and not in direct contact with reality environment that we want to study it on the one hand,

and on the other subjects are questioned, in most cases outside environment „natural”, ie social problem.

The questionnaires were conducted from January to May 2015.

Investigation based on questionnaire has the advantage that the number of those who can respond simultaneously is high, ensure anonymity of respondents, reducing the possibility of influencing the respondents' answers, it offers the possibility of free expression of opinions and presents low cost.

The questionnaires contain a number of 18 (questionnaire on individual holdings subsistence or semi-subsistence) and was built by identifying variables that highlights the area owned and how to exploit it, the technical means at its disposal, nature activities, employment, investments holdings, revenues, how the data output, crop insurance system. The questionnaire was administered in person by direct contact.

I must emphasize the spirit of cooperation shown by most subjects, their availability to the problems, expressing by them hope that these data will be useful, but mostly will be used for improving existing.

RESEARCH RESULTS

After centralization of data have highlighted the percentage obtained for each question and we plotted.

The research results are presented structured, following the main data recorded in the questionnaire applied on the ground with regard to farm structures as: sex family head in the sample, age and gender of the household head in the sample, training by attending a course organized by ANCA, number of family members involved in agricultural work, while some used in agriculture in a calendar year, the area owned, area worked on lease, technical means of ordering, calling for mechanization services, the number of animals owned, sale the types of products on the market, the share of sales in annual production obtained in the annual income of the family, bank loans, make investments in holding, sources of financing, the system of crop insurance and livestock, on whether the situation of holding to improved in the last 5 years, personal proposals on improving the condition of holding and agriculture generally.

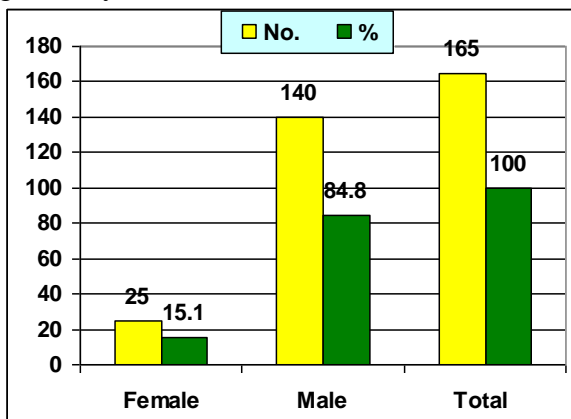


Figure 1. After the sex structure of the head family of the sample

Source: author's data after processing the questionnaire

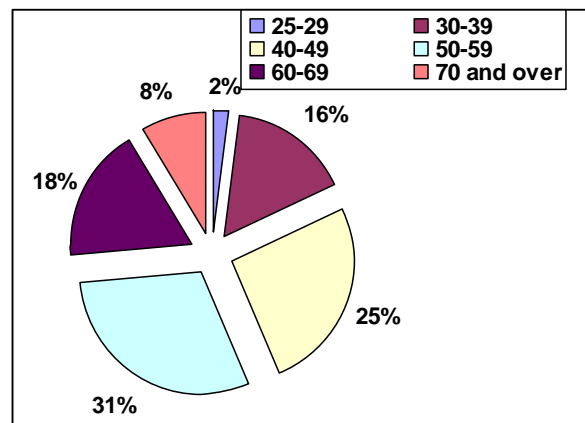


Figure 2. Age groups by structure

Source: author's data after processing the questionnaire

Analyzing the structure of the sample by gender shows that 84.8% are masculine or 140 respondents and 15.1% of female gender and 25 of those questioned (Figure 1).

The analysis by age of household head (Figure 2) shows that 29.69% of respondents aged between 50 and 59 years (3.03% are feminine and masculine gender 26.6%), 25.45% were aged between 40 and 49 years (5.45% are female and 20.0% like the masculine gender), 18.18% are aged between 60 and 69 years, followed by those aged between 30 and 39 with 16.36% and those aged 70 and above with 8.48%. as shown in Table 1.

Table 1

The structure of farms by age group and sex of head of household in the sample

Age group (years)	Female		Male		Total	
	No.	%	No.	%	No.	%
25-29	0	0	3	1,81	3	1,81
30-39	2	1,21	25	15,15	27	16,36
40-49	9	5,45	33	20,0	42	25,45
50-59	5	3,03	44	26,6	49	29,69
60-69	6	3,63	24	14,5	30	18,18
70 and over	3	1,81	11	6,67	14	8,48

Source: author's data after processing the questionnaire

Correlating the professional training courses through the National Agency for Agricultural Consultancy sex masculine that those who attended represent 24.2%, and if the female gender only 3.03% (Figure 3).

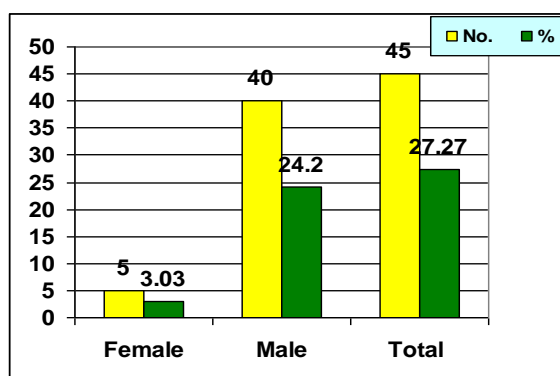


Figure 3. The structure of those who have followed a training course organized by ANCA

Source: author's data after processing the questionnaire

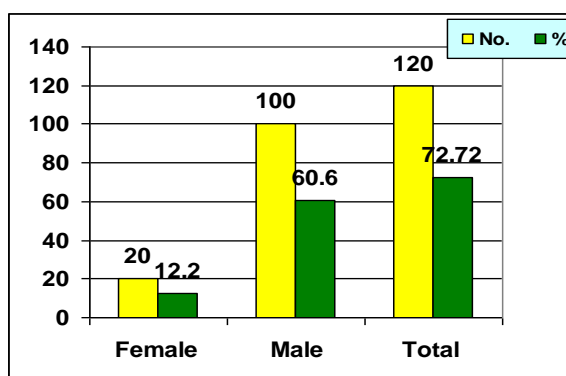


Figure 4. The structure of those which followed a training course organized by ANCA

Source: author's data after processing the questionnaire

Structure by number of family members (Figure 5) involved in agricultural work is as follows: 50.9% of respondents answered that participate 2 members, three members working 33.9%, 9.0% attend four members and 4.2% working member and 5 members and over (Figure 5).

The analysis used in agriculture after the approximate time in a calendar year of the respondents that mostly uses over 200 days, between 51 and 100 days 29.09%, followed by those employing between 101 and 200 days 24.24 %, and fewer days spent record 1.21% of the sample (Figure 6).

Of the 165 farms surveyed 25.4% have an agricultural area between 2 and 5 ha, 24.2% between 5 and 10 ha, 11.5% own an agricultural area between 10 and 20 ha, following those between 20 and 30 ha and between 30 and 50, each having 10.9%. Agricultural holdings with agricultural area between 1 and 2 ha are 9.0%, while holdings with areas between 50 and 100 ha have a share of 6.0% according to Table 2 and Figure 7.

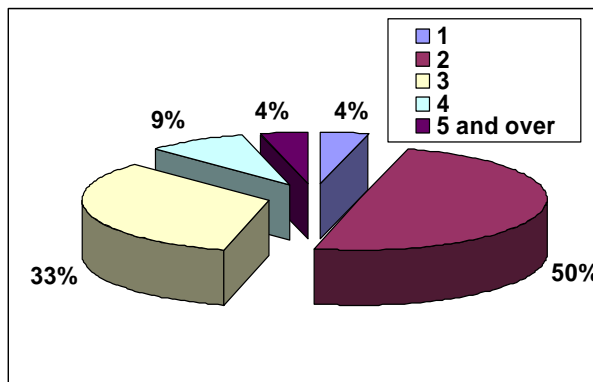


Figure 5. The structure of the number of members of the family that participate in farm work

Source: author's data after processing the questionnaire

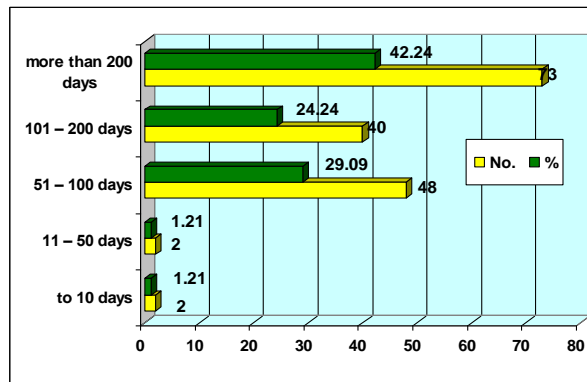


Figure 6. Some time after the structure used in agriculture in a calendar year

Source: author's data after processing the questionnaire

In terms of surface arable 31.5% hold an agricultural area between 2 and 5 ha, 22.4% hold an agricultural area between 5 and 10 ha, followed by those between 1 and 2 ha with 13.3%. Arable farms with between 50 and 100 ha represent 4.8% while a farm with over 100 ha is only 1.8%. Other destinations include the category in particular. Thus 7.2% hold the surfaces between 5 and 10 ha, 6.0% of holdings between areas 1 and hold 2 ha, and 5.4% surfaces between 30 and 50 hectares. Holdings in the last category belong to breeders of sheep in the County and the reason why possession of these surfaces is self-evident.

Table 2

Structure of holdings sampled area owned by

	1-2 ha		2-5 ha		5-10 ha		10-20 ha		20-30 ha		30-50 ha		50-100 ha		Over 100	
	No.	%	No.	%	No.	%	No.	%	No.	%	No.	%	No.	%	No.	%
Agricultural area	15	9,0	42	25,4	40	24,2	19	11,5	18	10,9	18	10,9	10	6,0	3	1,8
Arable land	22	13,3	52	31,5	37	22,4	15	9,0	13	7,8	4	2,4	8	4,8	3	1,8
Orchards and vineyards	1	0,6	1	0,6	1	0,6	1	0,6	2	1,2	-	-	-	-	-	-
Other destinations	10	6,0	8	4,8	12	7,2	6	3,6	6	3,6	9	5,4	5	3,0	-	-

Source: author's data after processing the questionnaire

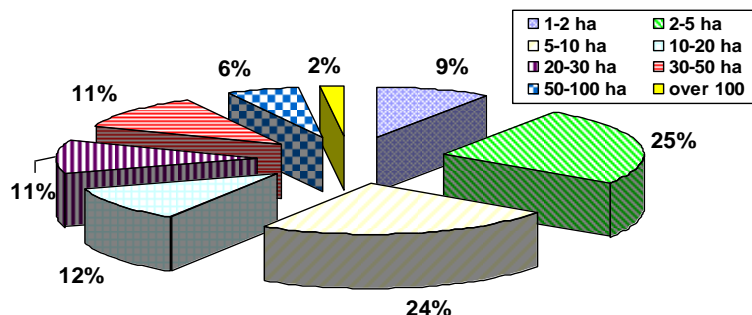


Figure 7. The structure of the area owned

Source: author's data after processing the questionnaire

All farms taken into study are using the land on their own and have areas of land under a lease. Of the total farmers questioned responded that working the Earth lease only

12.7%. The analysis performed after share-farmed surface as shown in Figure 8, show that 3.6% of those surveyed work in leased areas between 2 and 5 ha, 3.0% working in leased areas between 10 and 20 hectares, and 1.8% working in leased areas between 20 and 30.

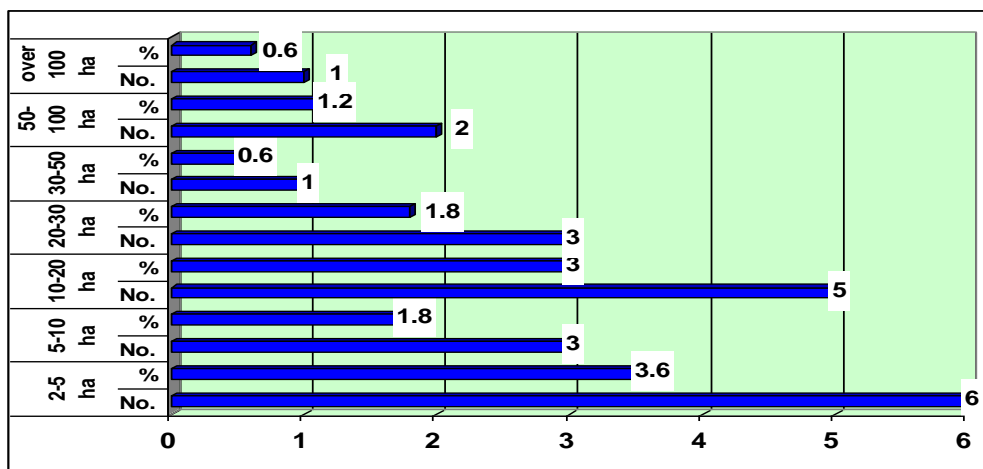


Figure 8. The structure of the farmed area
Source: author's data after processing the questionnaire

Table 3

The structure of the technical means available in the sample

Type of technical means	No technical means		1 technical means		2 technical means		3 technical means		4 technical means	
	No.	%	No.	%	No.	%	No.	%	No.	%
Draft animal	161	97,5	3	1,81	1	0,6	-	-	-	-
Tractors	111	67,2	43	26,0	9	5,4	1	0,6	1	0,6
Seeder	138	83,6	16	9,6	9	5,4	2	1,2	-	-
Row	141	85,45	22	13,3	2	1,2	-	-	-	-
Combines	158	95,7	7	4,2	-	-	-	-	-	-
Others	110	66,6	7	4,2	11	6,6	14	8,4	23	13,9

Source: author's data after processing the questionnaire

Analyzing the technical means available to farms surveyed, the situation is as follows (Table 3):

- 97.5% of respondents do not have any animal traction, while only 1.81% have a draft animal;
- 26.0% of respondents own a tractor, 5.4% have two tractors and 0.65 have only 3 or 4 tractors;
- 9.6% have a seed drill and only 5.4 second;
- 13.3% of respondents holding a hoe, while 85.45% do not have such technical means;
- only 4.2% of surveyed farmers hold a combines;
- 33.4% have other means among them: plows, disc harrows, trailers, cars managed fertilizers, sprayers and treated.

According to Figure 9, 143 respondents, 86.6% answered that question turn to mechanization services and only 13.3% do not use such services.

Another aspect of the research it was the number of animals held by farmers surveyed (Table 4). Such centralized data resulting from the following:

- 7.8% of respondents have two cattle, 6.0% have cattle, 5.4% have three cattle, 4.8% have four cattle, while 3.6% have between 10 and 20 cattle 1 2% have between 30 and 40 cattle;

- 8.4% of respondents have a milk cow and only 1.8% has between 10 and 20 dairy cows;
- 15.7% of respondents have four pigs, two pig holding 9.0%, 8.4% have five pigs, while only 5.4% have between 10 and 20 pigs, and 0.6% have between 40 and 50 pigs;
- 22.4% of farmers responded that they have între 10 and 20 poultry, 12.1% have between 30 and 40 poultry, 9.0% have between 60 and 70 poultry, and 4.2% have between 100 and 200 poultry and 1.8% have between 200 and 400 poultry;
- 7.8% of respondents have between 200 and 400 sheep, 10 sheep holding 4.8%, 4.2% have between 400 and 600 sheep and 1.2% over 800 sheep.

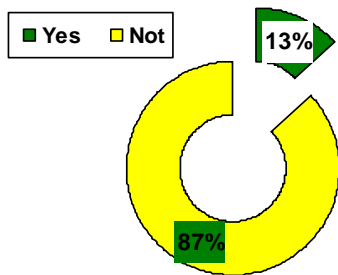


Figure 9. Share of holdings of mechanization hire

Source: author's data after processing the questionnaire

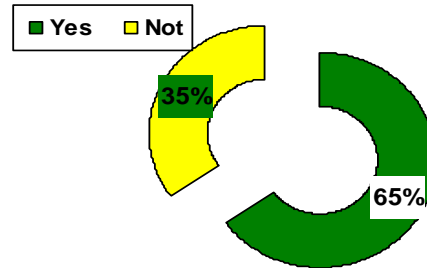


Figure 10. The structure of holdings that sell products on the market

Source: author's data after processing the questionnaire

Table 4

Structure of holdings by number of animals held in the sample

Heads	Total cattle		Milk cows		Horses		Goats		Swine		Poultry		Sheep	
	No.	%	No.	%	No.	%	No.	%	No.	%	No.	%	No.	%
1	10	6,0	14	8,4	10	6,0	1	0,6	2	1,2	-	-	-	-
2	13	7,8	12	7,2	8	4,8	-	-	15	9,0	-	-	-	-
3	9	5,4	13	7,8	2	1,2	4	2,4	9	5,4	-	-	-	-
4	8	4,8	6	3,6	-	-	-	-	26	15,7	-	-	-	-
5	7	4,2	-	-	-	-	2	1,2	14	8,4	-	-	-	-
6	2	1,2	2	1,2	-	-	1	0,6	5	3,3	-	-	-	-
7	-	-	1	0,6	-	-	3	1,8	8	4,8	-	-	-	-
8	3	1,8	2	1,2	-	-	1	0,6	7	4,2	-	-	-	-
9	-	-	-	-	-	-	-	-	2	1,2	-	-	-	-
10	-	-	-	-	-	-	-	-	-	-	3	1,8	8	4,8
10-20	6	3,6	3	1,8	-	-	-	-	9	5,4	37	22,4	8	4,8
20-30	-	-	-	-	-	-	-	-	2	1,2	-	-	-	-
30-40	2	1,2	1	0,6	-	-	1	0,6	-	-	20	12,1	-	-
40-50	1	0,6	-	-	-	-	-	-	1	0,6	-	-	-	-
50-60	-	-	-	-	-	-	-	-	-	-	-	-	-	-
60-70	-	-	-	-	-	-	-	-	-	-	15	9,0	4	2,4
70-80	-	-	-	-	-	-	-	-	-	-	-	-	-	-
80-100	-	-	-	-	-	-	-	-	-	-	4	2,4	3	1,8
100-200	-	-	-	-	-	-	-	-	-	-	7	4,2	2	1,2
200-400	-	-	-	-	-	-	-	-	-	-	3	1,8	13	7,8
400-600	-	-	-	-	-	-	-	-	-	-	-	-	7	4,2
600-800	-	-	-	-	-	-	-	-	-	-	-	-	2	1,2
800-1000	-	-	-	-	-	-	-	-	-	-	-	-	2	1,2
Total	61	36,9	54	32,7	20	12,1	13	7,8	100	60,6	89	53,9	49	29,6

Source: author's data after processing the questionnaire

Of all those polled 108 respondents respectively 65.45% responded that selling products to the market and 57 respondents (35, 5%) do not sell such products as shown in Figure 10. Of those who responded that selling products to market: 33.9% sell grain, meat, sell 25.45% 23.6% 13.3%, lambs, 10.3% cheese (Figure 11).

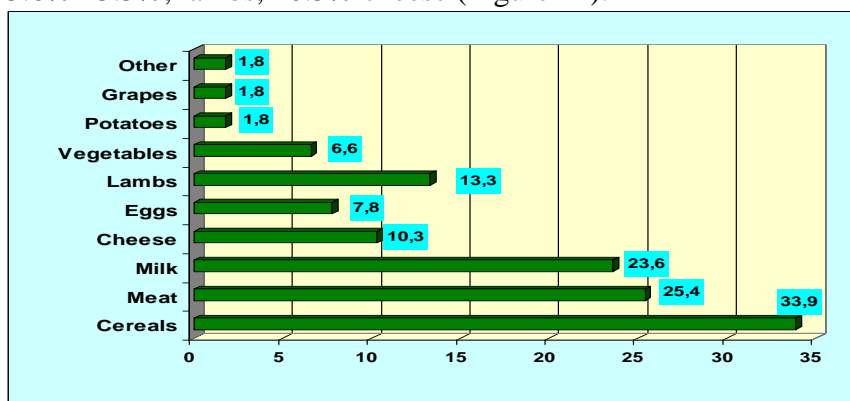


Figure 11. The structure of holdings that sell products on the market by product type
Source: author's data after processing the questionnaire

From the analysis of the sales share of farms after annual output and the annual income of the family (Figure 12) shows that: 33.93% responded that between 90% and 100%, 23.6% between 70% and 80% and 3.0% between 50% and 70%.

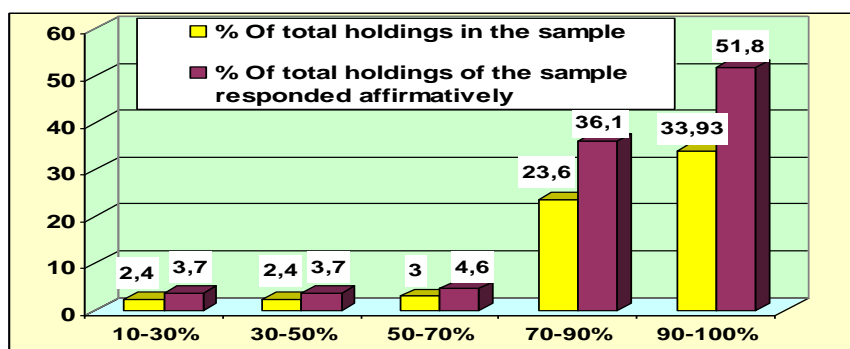


Figure 12. Structure of holdings that sell products on the market by product type
Source: author's data after processing the questionnaire

All the holdings in the sample responded that they have received grants in the past 5 years.

When asked if they resorted to bank loans, the majority responded negatively and only 6.6% answered affirmatively as shown in Figure 13. This is due to expensive loans in Romania and the fact that few banks investing in agriculture and the system bank remain inaccessible to farmers and the suspicion farmers as risky borrowers.

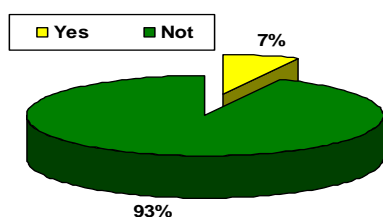


Figure 13. Structure of holdings which have recourse to bank loans
Source: author's data after processing the questionnaire

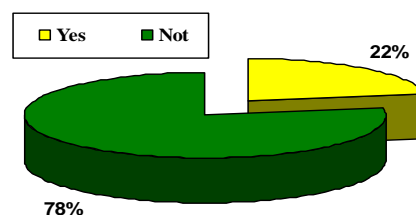


Figure 14. Farm structure have made investment in the holding
Source: author's data after processing the questionnaire

The farmers have resorted to long-term bank loans between 5 and 10 years, and amounts borrowed were between 10,000 and 100,000 lei lei. The purpose of these bank loans was purchasing of machinery and equipment, farm modernization, purchase of breeding stock and land acquisition (Table 5).

Table 5
The structure of farms that responded I resorted to bank credit in the sample after the credits, the amount of the loan and its purpose

		Holdings	
		No.	%
Period	3 years	1	0,6
	5 years	7	3,0
	10 years	3	1,8
Sum	Up to 10,000 lei	5	3,0
	10000-25000 lei	2	1,2
	25000-50000 lei	2	1,2
	50,000 -100 000 lei	2	6,6
The purpose	Purchase of machinery and equipment	1	0,6
	Farm modernization	6	3,6
	Purchase of breeding stock	2	1,2
	Land acquisition	2	1,2

Source: author’s data after processing the questionnaire

As regards holdings that invested, 22.4% said yes, while most answered that they have invested in the holding (Figure 14). This is because farmers lack the financial resources that enable them to invest in farm and community resources that might appeal in some cases become inaccessible due to excessive red tape, lack of capacity of beneficiaries to ensure co-financing projects, poor information on funding opportunities, etc.

Analyzing the sources of investment holdings that were 16.9%, and only 5.4% used their own and bank loans as shown in Figure 15.

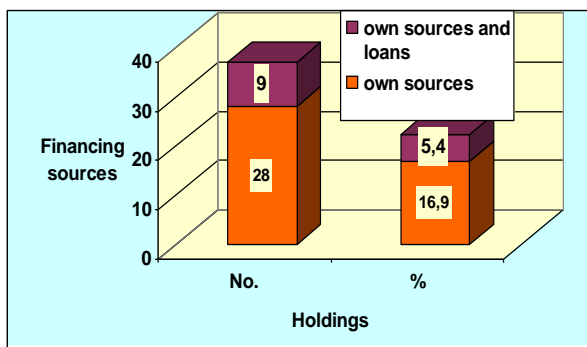


Figure 15. Farm structures depending on funding sources

Source: author’s data after processing the questionnaire

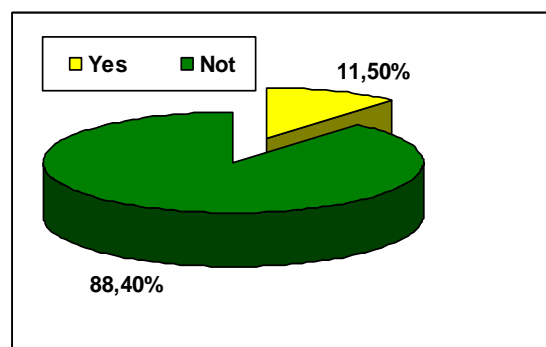


Figure 16. The structure of farm practice system crops and animals in the sample

Source: author’s data after processing the questionnaire

The amounts were invested by farmers in Table 6 were between 10,000 lei and 20,000 lei at the rate of 6.6% between 5,000 lei and 10,000 lei, 4.2%, between 20,000 lei and 30,000 lei, 2.4% and only 1.8% from 200,000 lei to 300,000 lei.

The objectives for which farmers have invested own sources and loans were the procurement of equipment and machines (12), building shelters for animals (9), land purchase (6), construction of storage (5) purchase of animals and plants for milking.

Table 6

Structure of holdings sampled the amount invested

The amount invested (lei)	Holdings	
	No.	%
5000-10.000	7	4,2
10.000-20.000	11	6,6
20.000-30.000	4	2,4
30.000-40.000	2	1,2
40.000-50.000	3	1,8
50.000-60.000	2	1,2
100.000-200.000	2	1,2
200.000-300.000	3	1,8
400.000-500.000	1	0,6
800.000-900.000	1	0,6
over 2.000.000	1	0,6

Source: author's data after processing the questionnaire

Crop insurance is the right choice if you want to protect crops against damage due to natural phenomena: the manifestation of the following hail; fire; Storm; downpour-direct effects; collapse/landslide; early frost of autumn; late spring frost, etc. However only 11.5% of those questioned (Figure 16) responded in the affirmative to this question.

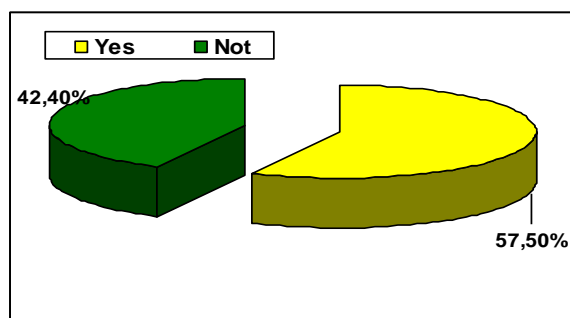


Figure 17. The structure of the answer to the question if the farm has improved over the last 5 years

Source: author's data after processing the questionnaire

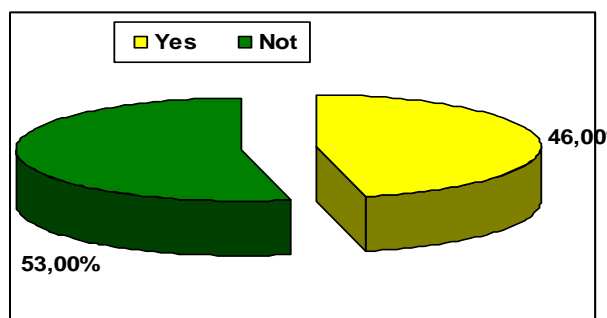


Figure 18. Personal structure of holdings after the proposals on improving the status of the holding and of the agriculture in general

Source: author's data after processing the questionnaire

Holding situation has improved in the last 5 years to 95 holdings, ie 57.5% of respondents, and has not improved to 70 holdings 42.4% respectively (Figure 17).

The reasons for holding that the situation had improved were: increased subsidies; increased price of milk, cheese and live lambs; increased subsidy per animal; increased income; increased price of vegetables increased price of grain; use of modern technologies, herbicides and chemical fertilizers.

The negative answer was motivated lack of financial resources, low prices of agricultural products, there are no markets for lambs.

Given the personal proposals on improving the state of the farm and agriculture in general, 46.0% (Figure 18) had proposals among which the following: market for grain prices on fuel used in agriculture and chemical fertilizers, establishment of associations of farmers, provision of soft loans for agriculture, subsidies for grain storage.

CONCLUSIONS

After processing quantitative results and their qualitative interpretation, we formulated conclusions are presented below.

- by age of household head that over 55% of respondents aged between 40 and 59 years.
- farms with agricultural area between 1 and 2 ha are 9.0% and 25.4% of holdings have an agricultural area between 2 and 5 ha and 24.2% between 5 and 10 ha.
- situation of arable land is as follows: 31.5% have an agricultural area between 2 and 5 ha, 22.4% own an agricultural area between 5 and 10 ha, followed by those between 1 and 2 ha by 13.3%.
- considering the technical means available to farms surveyed, the situation is as follows: only 26.0% of respondents own a tractor, 5.4% have two tractors; 9.6% have a seed drill and only 5.4 second;
- of those who responded that sell products to market: 33.9% sell grain, 25.45% sell meat, milk 23.6%, 13.3% lambs, 10.3% cheese.
- analysis holdings after the share sales resulting in annual production and annual income of that family: 33.93% said between 90% and 100%, 23.6% between 70% and 80% and 3.0% between 50% and 70%.
- the question of whether resorted to bank loans, the majority responded negatively and only 6.6% answered affirmatively.
- objectives for which farmers have invested own sources and loans were the procurement of equipment and machines, building shelters for animals, land acquisition, construction of storage facilities, purchase of milking animals and plants.
- only 11.5% of respondents answered affirmatively to the question whether they provide crops.
- farm situation has improved in the last 5 years to 95 holdings, ie 57.5% of respondents, and has not improved to 70 holdings 42.4% respectively.

REFERENCES

1. **BRAD, I., GHERMAN, R., MĂNESCU, CAMELIA, SÎRBULESCU, CLAUDIA, DINCU, ANA-MARIANA**, 2015, Study regarding the current situation of farms in Romania, *Journal of Biotechnology*, Vol.208S, p.S63;
2. **BRAD, I.**, 2015, *Managementul producției*, Eurostampa, Timișoara;
3. **DINCU, ANA-MARIANA**, 2007, The vegetal production dynamic of the Timiș country, *Lucrări științifice Management agricol*, Seria I, Vol. IX (1), Editura Agroprint, Timișoara;
4. **FEHER, ANDREA, GOȘA, V., HURMUZACHE, TABITA, RAICOV, M.**, 2013, Financing of Rural Development in Romania-Present and Perspectives, *The sixth International Scientific Conferences, Rural Development 2013, Proceedings*, vol.6, Book 1, Lituania, pag. 525-531;
5. **IANCU, T.**, 2007, *Economie agrară*, Editura Agroprint, Timișoara;
6. **ROTARIU, T., PETRU, I.**, 1997, *Ancheta sociologică de opinie. Teorie și practică*, Editura Polirom, Iași;
7. **SÎRBULESCU, CLAUDIA, PÎRVULESCU, LUMINIȚA, IANCU, T.**, 2015, The financial resources of agriculture, *Lucrări Științifice, Management Agricol*, seria I, volumul XVII (3), Editura Agroprint, Timișoara.