

THE EVOLUTION OF AGRICULTURE IN ROMANIA AFTER ACCESSION TO THE EUROPEAN UNION

IONELA-IASMINA VELCOTA¹, IONUT-COSMIN GHEORGHESCU*¹,
NICOLETA MATEOC-SIRB¹

¹*Banat University of Agricultural Sciences and Veterinary Medicine, "King Michael I of Romania", Faculty of Management and Rural Tourism, Timisoara, Romania*

*Corresponding author's e-mail: gheorghescu_ionut@yahoo.com

***Abstract:** This report evaluates the evolution of agriculture in Romania after the accession to the European Union. The accession to the European Union represented for Romania an important moment of the post-communist period, being valued at that moment as a guarantee of the country's enrollment on a trajectory and of development and democracy. The year 2007 opened for Romania a new era in the agricultural and rural development economy. Our country had to adapt quickly to its economy soon and immediately afterwards, in order to be able to integrate into the internal market of the European Union and to fully adopt the European acquis corresponding to the Common Agricultural Policy (CAP). In this context, the authors of the paper present main trends of agriculture in Romania after 2007.*

***Key words:** agriculture, productions, evolution, Common Agricultural Policy, rural development*

INTRODUCTION

Romania's accession to the European Union (EU), on January 1, 2007, marked the beginning of a new phase of economic development, centered on the principle of economic and social cohesion, emphasizing the promotion of economic growth conditions and ensuring a high level of employment and a balanced and sustainable development.

The evolution of the agriculture and the rural area of Romania is the complex result of some factors of historical, political, economic, social, conjunctural nature and not least of some factors of international nature. In order to scientifically substantiate what we need to do to restructure our agriculture, to revive the Romanian rural area, to awaken our peasants, we need an analysis of Romania's agricultural path because with the rebirth of the Romanian peasantry and the Romanian nation, the Romanian nation is reborn [1].

The Common Agricultural Policy is the most integrated sectoral policy of the European Union, using a mix of interventions aimed mainly at integrating agricultural markets, supporting farmers' incomes and supporting rural development. At the same time, it is applied relative unitary in a very heterogeneous space, between which very large gaps of development, productivity, income, infrastructure and living standards persist.

Therefore, it is almost inevitable that there will be many inconveniences and reproaches related to the functioning and effects of this policy. However, for the Western European countries, the consistent application of the Common Agricultural Policy over the last 60 years has been a success, in the sense that it has transformed western Europe from an area dependent on agricultural imports from other continents into the world's most important agricultural power [2].

And for the agricultural sector and the rural world in Romania the application of the Common Agricultural Policy, in a relatively short period from the accession until now, has produced positive effects, but some less satisfactory ones.

We consider that the first positive effect is the forecast, the fact that the measures and interventions are approximately the same from year to year, and the farmers have a financing for production, through the direct payments that were granted from European funds, regardless of the economic situation-financial of our country.

In this context, the incomes of the farms increased steadily in this interval (by 50% between 2007-2016) due, in particular, to the subsidies received in the form of direct payments, which came to represent up to 40% of the incomes of the farms. Physical yields have increased in certain crops, especially cereals and oilseeds.

But the rest of the granting of the direct payments represented the attestation of the polarization of the agrarian structure, the disappearance of many medium and small farms and the consolidation of the large farm segment.

Another category of effects that felt strongly in agriculture and rural space originated in a wider context created by accession to the European Union, by opening markets and free movement of products, labor and capital. Farmers suffered from the low competitiveness of certain products, especially animal products, but also vegetables and fruits, which could not cope with the competition of similar products from other countries.

But the rural environment had to suffer as a result of the migration of the young workforce to better paid jobs in western Europe, or other european countries. The migration of the young labor force, the depopulation of the villages, correlated with the accentuated aging of the population employed in agriculture, represents a phenomenon that has happened not only in Romania, but also in the other Eastern European states that have integrated into the single european market [3].

At the same time, due to the condition regarding the opening of the free movement of capital, an important part of the agricultural lands in Romania have passed into their own or are exploited by foreign farmers.

On the other hand, the rural environment and the farmers received important funds for production and investments. During the period 2007-2013, the support through the CAP was 15.8 billion euros, of which 7.8 billion under pillar 1 (EAGF) and 8 billion through pillar 2 (EAFRD). Between 2014-2020 the CAP support is over 20 billion euros, of which 11.35 billion in pillar 1 (EAGF) and 8.12 billion in pillar 2 (EAFRD).

We wonder if the use of this money will contribute to a better change in the quality of life and the well-being of the rural population. Or a more legitimate question would be about the time period when the changes will become consistent and irreversible.

During the pre-accession period, a series of assessments were made regarding the effects of the CAP application on farmers and consumers. These assessments mainly started from the differences in competitiveness between the romanian and european agricultural products, predicting that after the accession the farmers will have to lose, and the consumers will win, due to the fact that for many products the average european prices were lower than those romanian.

Looking back we can say that things are actually infinitely more complex. In fact, it was the integration of the Romanian society into the consumer society that changed, leveled, integrated human consumption behaviors.

But in a longer context, we must not forget that the realization of the European project has brought peace, stability and prosperity on the continent.

MATERIALS AND METHODS

In order to carry out this scientific work I studied various materials in the field and extracted the data needed for the study. After the research I structured the data, we centralized them and finally I made a summary of them followed by final conclusions.

Referring to the Romanian rural space, dominated by the economic aspect of agriculture, the financial contribution allocated through the SAPARD community program represented a challenge for Romania. Starting from the regulations of the Council of Europe 1260 and 1268 from 1999, regarding the pre-accession measures, the Government of Romania, through the Ministry of Agriculture and Food, elaborated the National

Program for Agriculture and Rural Development (PNADR), document submitted by our country to the European Union. On December 12, 2000, the European Commission approved this program (version of November 22, 2000), on the basis of which the SAPARD Program in Romania was implemented [4].

Regarding the allocations for rural development, the National Program for Rural Development 2007-2013 established the policies and actions for rural development for the period 2007-2013 in the fields of agriculture, forestry and rural development, being elaborated by the Ministry of Agriculture and Rural Development through General Directorate for Rural Development. The restructuring of the agricultural sector requires significant direct investments to equip agricultural holdings coupled with environmental protection measures and management of agricultural and forestry land, as well as for the development of the non-agricultural rural economic sector, meant to facilitate the employment of the available labor force from agriculture, to increase population incomes. and poverty reduction in rural areas.

The National Program for Rural Development 2014-2020 (PNDR 2020) is the program that grants non-reimbursable funds from the European Union and the Government of Romania for the economic and social development of the rural area in Romania. The technical and financial implementation is ensured by the Agency for Financing Rural Investments. Farmers, processors, entrepreneurs and local public authorities have about 9 billion euros available, non-reimbursable European funds for investments in European standards, efficient and cost-effective [5].

RESEARCH RESULTS

During the period of transition and pre-accession to the European Union, the mechanisms of support of the Romanian agriculture have experienced important variations, both in terms of the size of the funds allocated annually and in terms of the economic-financial instruments used, their analysis revealing the lack of a legislative and institutional framework coherent and stable.

During the beginning of the transition, the first forms of financial support were introduced and applied, from the state budget, in the form of price differences granted to processors in the food industry. Gradually a complicated system of subsidies applied to the prices of the inputs was introduced, and subsequently, through Law 83/1993, the allocations, the subsidies to the interest rates for the production and investment credits, the production premiums and other compensations were regulated. The main form of support of the agricultural producers was represented by the production premiums, included in the prices of four products considered of national interest (wheat, pork, poultry and milk) for which the minimum guaranteed prices were established [6].

The whole period, started in 1990 until Romania's accession to the European Union, in 2007, can be seen as an amalgam of methods, measures and attitudes contrary, hesitant, incoherent, inconsistent and bureaucratic that, in fact, caused a waste resources from a budget insufficient for a real and sustainable development of agriculture and rural space. The performance of the Romanian agriculture decreased, and the budgetary resources allocated were, rather, wasted and used either for the social protection of subsistence households, or for the benefit of large agricultural enterprises, being financially and implicitly unsustainable, not being a middle class family farms.

Despite all the shortcomings, we appreciate that, after signing the documents of association with the European Union, the Romanian authorities have elaborated the necessary documents for accessing some especially important funds granted by the EU to the candidate countries. France goes into detail about the assistance of the European Union in the pre-accession phase of the Central and Eastern European countries, we mention that,

from 1990 to 2006, the funds allocated by the European Union for the assistance of the countries of central and eastern Europe totaled about 80 billion, granted in the form of pre-accession funds SAPARD, PHARE and ISPA.

It can be appreciated that the implementation of SAPARD was a very important exercise, beneficial for Romania, benefiting from important financial resources, but also from the opportunity to understand, know and itself the mechanism of allocation and use of these resources in accordance with the Agricultural Policy Common [7].

The total EU cereal production in the period 2007-2018 saw an increase, while in Romania the increase was mainly due to the increase of the average production. Average yields per hectare, for cereals, although growing, are lower than the EU average. In 2015 the average cereal production represents only 64% of that registered in the EU.

In the table below as well as in the graph one can obtain the evolution of the cultivated areas at the main field wheat, corn, barley and oats, sunflower, colza, rice and soy, between 2007-2018, (figure 1).

Table 1.
Evolution of the cultivated areas at the main field crops (thousands of hectares)

The year	Wheat	Corn	Barley and oats	Sunflower	Rice	Colza	Soy
2007	1975.0	2524.7	363.8	835.9	8.4	346.9	133.2
2008	2110.3	2441.5	394.0	813.9	9.9	365,0	49.9
2009	2148.8	2338.8	517.5	766.1	13.3	419.9	48.8
2010	2162.4	2098.4	515.8	790.8	12.4	537.3	63.9
2011	1947.0	2589.7	419.5	995,0	12.7	392.7	72.1
2012	1997.6	2730.2	424.2	1067,0	11.3	105.3	79.8
2013	2104.0	2518.3	495.7	1074.6	11.9	276.6	67.7
2014	2112.9	2512.8	516.0	1001,0	12.7	406.7	79.9
2015	2106.6	2605.2	468.5	1011.5	11.1	367.9	128.2
2016	2137.7	2581.0	481.6	1039.8	9.4	456,0	127.3
2017	2052.9	2402.1	455.0	998,0	9.1	598,0	165.1
2018	2109.0	2371.0	424,0	1098,0	8.4	632,0	167,0

Source: <https://www.madr.ro/>, year 2019

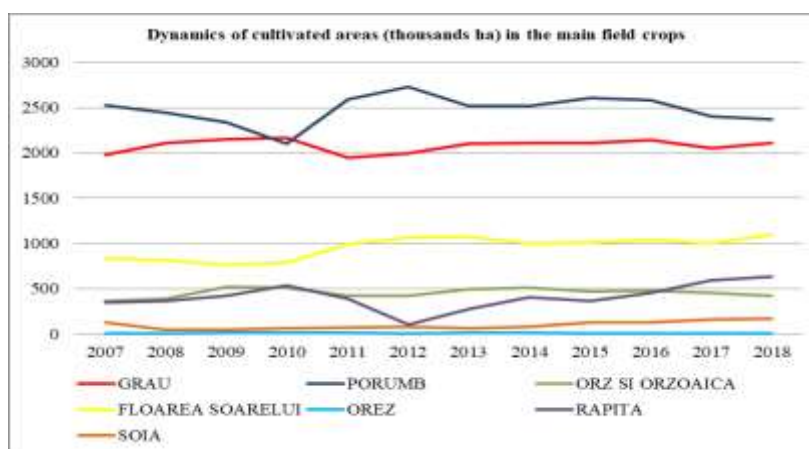


Figure 1. Evolution of the cultivated areas at the main field crops

Source: <https://www.madr.ro/>, year 2019

In Romania, the area cultivated with cereals in 2016 was 5486.9 thousand hectares, of which 39% were cultivated with wheat, 47% with corn, 5% with barley, 3% with oats and 5% represented other cereals. The surfaces cultivated with cereals have remained somewhat constant, with smaller variations after 2007, while the average productions have a growth tendency, which is also reflected in the total wheat productions. The dependence

of the producers on the climatic factors caused the cereal production to present important variations, during the studied period [8].

From the point of view of the structure by size classes for cereal farms, in Romania, we observe a constant tendency to combine land in farms of medium (20-99.9ha) and large size, over 100ha. Thus, the number of medium and large farms that grow wheat increased in the period 2003-2013 by 14.5% and respectively by 56.4%, the area cultivated by them registering increases of 37.6%, in the case of the medium and 44 respective farms, 3% for large farms.

The pre-accession funds to the EU (SAPARD) and later the National Rural Development Program, facilitated the acquisition of high-performance agricultural equipment and with them the transfer of know-how, finally leading to the land commas in the medium and large farms.

In the table below as well as in the graph you can get the evolution of the productions made at the main field wheat, corn, barley and oats, sunflower, colza, rice and soy, between 2007-2018.

Table 2.

Evolution of the productions made in the main field crops

The year	Total production thousand tons						
	Wheat	Corn	Barley and oats	Sunflower	Rice	Colza	Soy
2007	3044.5	3853.9	531.4	546.9	27.	361.5	136.1
2008	7181,0	7849.1	1209.4	1169.7	48.9	673,0	90.6
2009	5202.5	7973.3	1182.1	1098,0	72.4	569.6	84.3
2010	5811.8	9042,0	1311,0	1262.9	61.6	943,0	149.9
2011	7131.6	11717.6	1329.7	1789.3	65.3	739,0	142.6
2012	5297.7	5953.4	986.4	1398.2	50.9	157.5	104.3
2013	7296.4	11305.1	1542.2	2142.1	54.6	661.1	149.9
2014	7584.8	11988.6	1712.5	2189.3	45.2	1059.1	202.9
2015	7962.4	9021.4	1623.2	1785.8	49.8	919.5	262.1
2016	8431,0	10746.4	1817.3	2032.3	43.6	1292.8	263.4
2017	10035,0	14326.	1906.7	2912.7	43.3	1673.3	393,0
2018	10130,0	18353,0	1876,0	3080,0	44.4	1610,0	460,0

Source: <https://www.madr.ro/>, year 2019

After the cereal production, Romania is ranked 8th in the EU in 2007, so that in 2015 it will be ranked 6th. Romania, was placed on the 4th position after the surface cultivated with wheat and on the first place after the surface cultivated with corn, place maintained between 2007-2015.

In Romania, the average wheat production was at 50% of the European level, between 2007-2009, and the growth of the average wheat production was not in the rhythm registered in the EU, so that between 2012-2015 the average wheat production represents only 42% of that registered in the EU. In contrast, the average corn production had a more pronounced increase, so that in the period 2007-2009 it represents 36% of the EU average, so that in 2013-2015 it represents 53% of the average value registered at EU level [9], (figure 2).

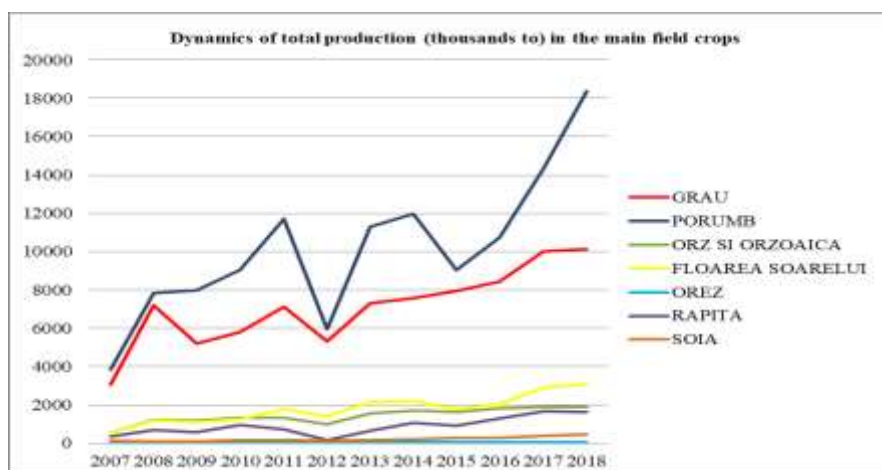


Figure 2. Evolution of the productions made in the main field crops

Source: <https://www.madr.ro/>, year 2019

The average productions per hectare low in the case of Romania compared to the big producing countries at European level are caused, on the one hand, by extreme weather conditions, such as droughts, floods or frost, but also by the lack of effective measures to improve them, by developing the systems irrigation, especially in the areas that are most exposed to drought. Also, other measures that have the effect of an average production per hectare higher, such as: increasing the fleet of tractors and high efficiency machines, optimizing the treatments for fertilization and pest control as well as choosing some hybrids to be considered it ensures increased resistance to external environmental factors and pests. Another cause of the low average production is the very high fragmentation of the land [10].

In the table below as well as in the graph you can see the evolution of the average productions registered in the main field wheat, corn, barley and oats, sunflower, colza, rice and soy, between 2007-2018, (figure 3).

Table 3.

Evolution of the average registered productions

The year	Average production kg / hectare						
	Wheat	Corn	Barley and oats	Sunflower	Rice	Colza	Soy
2007	1541	1526	1461	654	3263	991	1021
2008	3403	3215	3069	1437	4933	1844	1817
2009	2421	3409	2284	1433	5426	1357	1726
2010	2688	4309	2542	1597	4966	1755	2345
2011	3663	4525	3170	1798	5149	1882	1980
2012	2652	2180	2325	1310	4499	1496	1308
2013	3468	4488	3111	1993	4581	2408	2216
2014	3590	4770	3319	2187	3551	2604	2539
2015	3780	3462	3461	1765	4482	2499	2045
2016	3944	4159	3773	1955	4625	2835	2067
2017	4888	5959	4186	2917	4746	2798	2390
2018	4803	7740	4424	2805	5280	2547	2754

Source: <https://www.madr.ro/>, year 2019

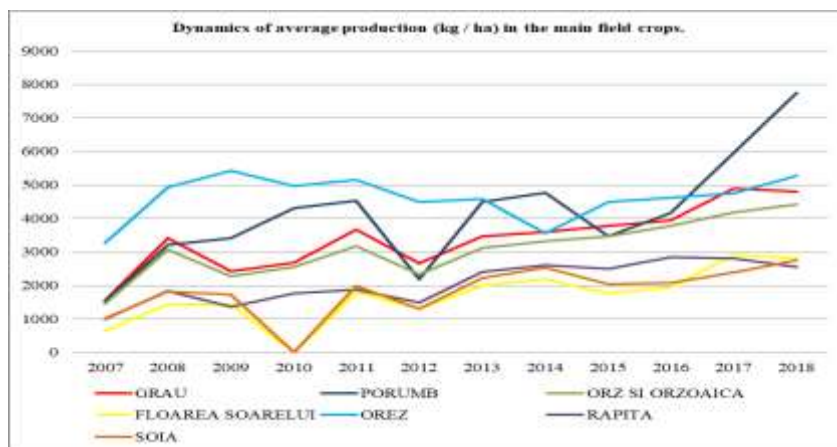


Figure 3. Evolution of the average registered productions

Source: <https://www.madr.ro/>, year 2019

Regarding the number of animals expressed in standard units (UVM), they decreased by 25% during the analyzed period. The evolution of livestock by species indicates that the number of herds decreased in 2013, compared to 2007, in cattle, pigs and poultry. At the same time, the number of sheep and goats has been increased. Livestock are predominantly kept in small farms, the average number of livestock on the farm is around 2 UVM, and the tendencies to consolidate livestock are very slow in all regions. The largest number of animals on the farm (around 3 UVM) was registered in 2013 in the west region.

At the country level, the livestock are concentrated in small and medium-sized farms, from classes under 2000 euros, between 2000 and 3999 euros and between 4000 and 7999 euros. These three size groups hold more than half of the livestock in Romania. In large farms, which have a production of 500,000 euros and over, only 16% of the cash is held [11].

From the quantitative point of view, the largest number of animals expressed in UVM was registered in 2013 in the North-East region (19% of the whole country), the animals being concentrated in small farms (2000-3999 euros) and medium (4000-7999 euros). At the same time, in certain regions, livestock are kept on farms with a production of over 500,000 euros annually, mainly due to the presence of the Smithfield pig breeding complex. A relative concentration of herds is observed in the Bucharest-Ilfov (40.3%) and South-East (25.6%) regions.

In the table below and in the graph you can see the dynamics of the total number of animals (thousands head) during the period 2007-2013, (figure 4).

Table 4.

Evolution of the total number of animals

The year	The total number of animals (thousands of heads)			
	Cattle	Swine	Sheep and goats	Poultry
2007	2819	6565	9334	82036
2008	2684	6174	9780	84373
2009	2512	5793	10059	83843
2010	1985	5387	9623	78877
2011	2130	4153	11331	70390
2012	2164	4011	12298	71767
2013	2197	4054	12710	67989

Source: <https://www.madr.ro/>, year 2019

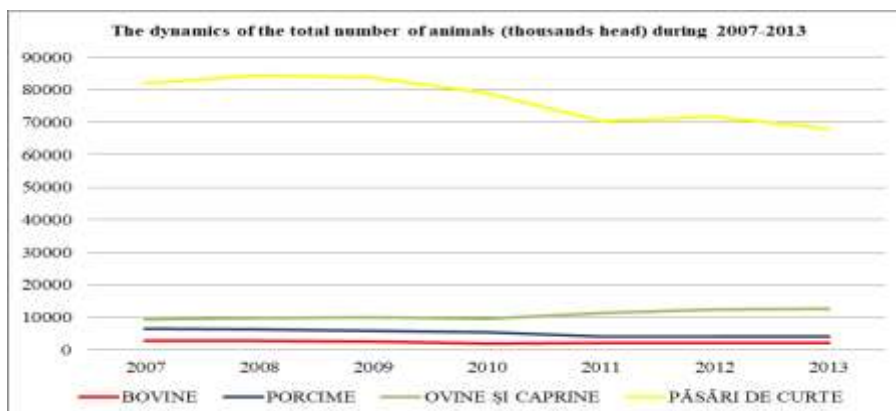


Figure 4. Evolution of the total number of animals

Source: <https://www.madr.ro/>, year 2019

The productive specialization of the farms in relation to the economic size indicates that the small farms have a more diversified production mix compared to the large and very large farms. Small farms are mainly oriented to a mix of diverse crops and combined with animal husbandry, field horticulture and permanent crops, including fruit. Medium farms are also geared towards horticulture, herbivore breeding, mainly sheep and goats.

The main orientation of the large farms is towards the cultivation of cereals, oil and protein plants, which occupy 36% of the agricultural area of the country and 57% of the area exploited by large and very large farms. The next specialization is that of other field crops, which occupy 25% of the agricultural area of the country and 29% of areas occupied by large and very large farms [12].

The productive orientation of large and very large farms towards cereals, oil and protein plants has been accentuated after the accession to the European Union, due to the increase of prices for cereals and oil seeds on the external market and not least due to the granting of direct payments per hectare, which have made a significant contribution to orient the production of large and very large farms to the crops that benefit with a predilection of this type of subsidies.

Regarding the total meat production, I presented and represented this situation in Romania between 2007-2013, in the table below and in the graph, (figure 5).

Table 5.

Evolution of the realized productions

The year	Total meat production thousand head			
	Cattle	Swine	Sheep and goats	Poultry
2007	333	642	110	416
2008	306	605	104	410
2009	264	585	104	489
2010	205	553	100	446
2011	289,3	595	150	468
2012	198,5	555	107	470
2013	232,6	582	171	485

Source: <https://www.madr.ro/>, year 2019

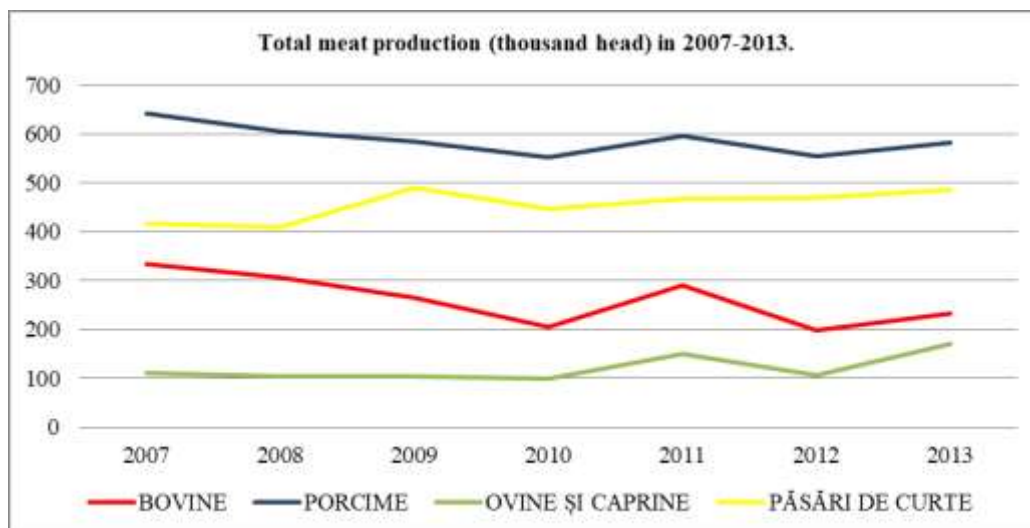


Figure 5. Evolution of total productions in the main animal species

Source: <https://www.madr.ro/>, year 2019

Also at the European Union level, the value of vegetable production was 32,143 million euros in 2016. Romania's vegetable production reached the value of 1,997 million euros in 2016, representing 6.2% of the value of European vegetable production.

In 2015, Romania had an area of over 149 thousand hectares of land cultivated with vegetables, representing 7.2% of the area cultivated with vegetables at European Union level.

Regarding the total production of vegetables, including watermelons at European Union level, Spain was on the leading edge, with over 23% of the total production of vegetables, followed by Italy with 19.6% and France with 8.6. In 2015, the total production of vegetables, including melon of Romania, registered the value of 2,468 thousand tons, which represented about 4% of the total production of vegetables at the level of the European Union.

Although in the last years there has been an increase of the areas cultivated with vegetables in greenhouses and solariums, in 2016 only 4115 hectares were registered areas cultivated with vegetables in greenhouses and solariums, which represents 1.8% of the total area cultivated with vegetables. Vegetables grown in the field represent 57.5% of the total area grown with vegetables, and fresh vegetables from the family gardens represent about 38% of the total area grown with vegetables.

In 2015, cabbage production had the highest share in total vegetable production 34.1%, followed by tomato production 22.3%.

A special category is the vegetables grown in the organic farming system. In recent years, the concern for healthy eating has led to an increase in demand for organic products. Currently, the domestic market for fresh and processed organic vegetables is expanding. Manufacturers must go through a strict process for obtaining and marketing organic products that carry specific labels and logos [13].

In the graphs below you can see the evolution of the surfaces as well as the productions in the main species of vegetables, between 2007-2016, (figure 6-7).

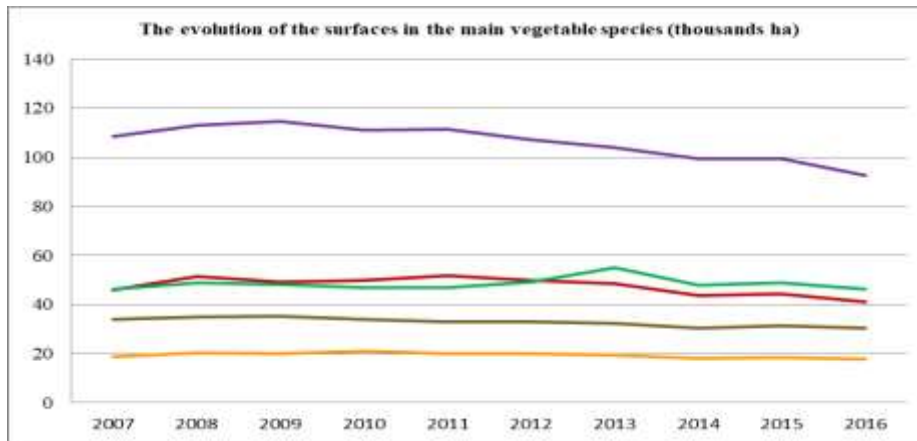


Figure 6. The evolution of the crop areas of the main vegetable species
 Source: <https://www.madr.ro/>, year 2019

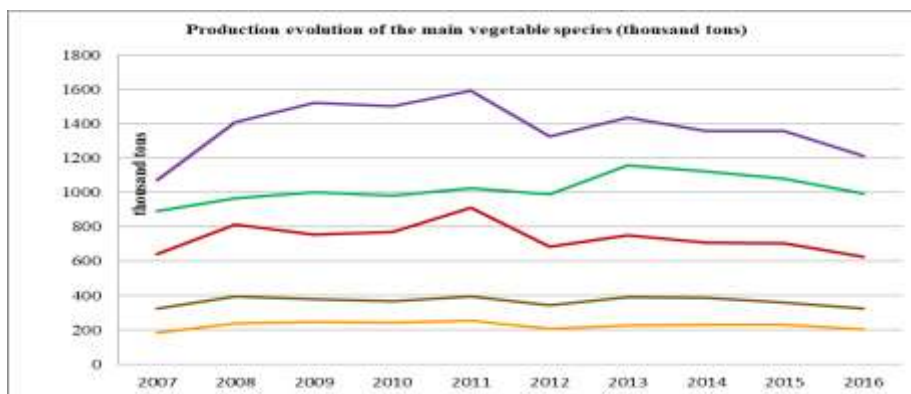


Figure 7. Evolution of the productions made in the main vegetable crops
 Source: <https://www.madr.ro/>, year 2019

Although Romania has high potential for developing agriculture in an ecological system, most of the fresh and processed vegetables that carry the label of organic product come from import. In 2010-2016, in Romania, the area cultivated with vegetables in organic farming system had an ascending trend, registering in 2016 the value of 1175.3 hectares. In 2016 the production of fresh vegetables, including melons, cultivated in the organic farming system was 3321 tons, Romania occupies the 8th place in the European Union. In 2015, Romania ranks 5th place with 9.6% in the area cultivated with tomatoes at the level of the European Union, but with a production of 2.6% of the production of tomatoes from the EU-28 level is located on place 8. In Romania, in 2015, the average production per hectare of tomatoes was 15857 kg/ha, registering a decrease by 2% compared to the previous year.

In 2016, the area cultivated with vegetables was 228 thousand hectares, of which: 18% areas cultivated with tomatoes, 13% areas cultivated with onions, 20% areas cultivated with white cabbage and 8% areas cultivated with peppers.

Regarding the orchards of fruit trees, fruit shrubs and nuts, they cover an area of 2542.11 thousand hectares in the European Union. Almost half of this area is occupied with orchards with 39% woody fruit, shrubs and fruit specific to the subtropical and tropical climate. The rest of the surface, over 1250 thousand hectares, is occupied with orchards of fruit trees specific to the temperate climate. Among the temperate climate species, the apple is the most widespread. With an area of 537.91 hectares in 2015, apple orchards occupy an important share in the total area of orchards, these are followed by peach and nectarines, plums, cherries and cherries. In 2016, the area of orchards in

Romania was 138.7 thousand hectares. The plum is the most widespread species, with a total weight of 47.3%, the second place is occupied by apple orchards, with a surface area of 40.1%, the other species occupy small areas and weights of 4 , 4% cherry and cherry orchards, 2.3% pear orchards, 1.6% apricot, 1.3% peach and nectarine orchards.

In Romania, the number of farms holding orchards and fruit trees is 290,770 units, representing 8% of the total farms. The area with orchards and fruit shrubs occupies a weight in the SUA of 1.1%. The most important weights of women and surfaces with orchards are found in Italy and Poland, where 14.5% respectively 13.9% of farms own orchards, and in total the SUA orchards represent 3.1% in Italy and 2.5% in Poland.

In the European Union, the value of fruit production amounted to over 26128 million euros in 2016, with a weight of 12.7% in the value of vegetable production. Romania's fruit production, with a value of almost 891 million euros, represented 3.4% of the European fruit production value [14].

In terms of physical production, in the EU-28 the most important fruits were apples, with a level of 12757.70 thousand tons in 2015. Apple production is concentrated in six EU member states. Together they own almost 75% of the area with apple orchards, they produce 75% of the apple harvest and almost 72% of the total value of the EU-28 apple production. Poland owns the third part of the EU-28 orchards and produces the fourth part of apple production.

Depending on the area, Romania ranks second with 10.4%, but produces only 3.6% of apple production. This fact is explained by the low productive potential given by the advanced age of the orchards and by the predominance of the classical culture system. In Romania, the average production in apple orchards is more than four times lower than in France, 3.7 less than in Germany and twice as small as in Hungary.

In the graphs below you can see the evolution of the surfaces in the main fruit species as well as the evolution of the production in the main fruit species, between 2007-2016 [15], (figure 8-9).

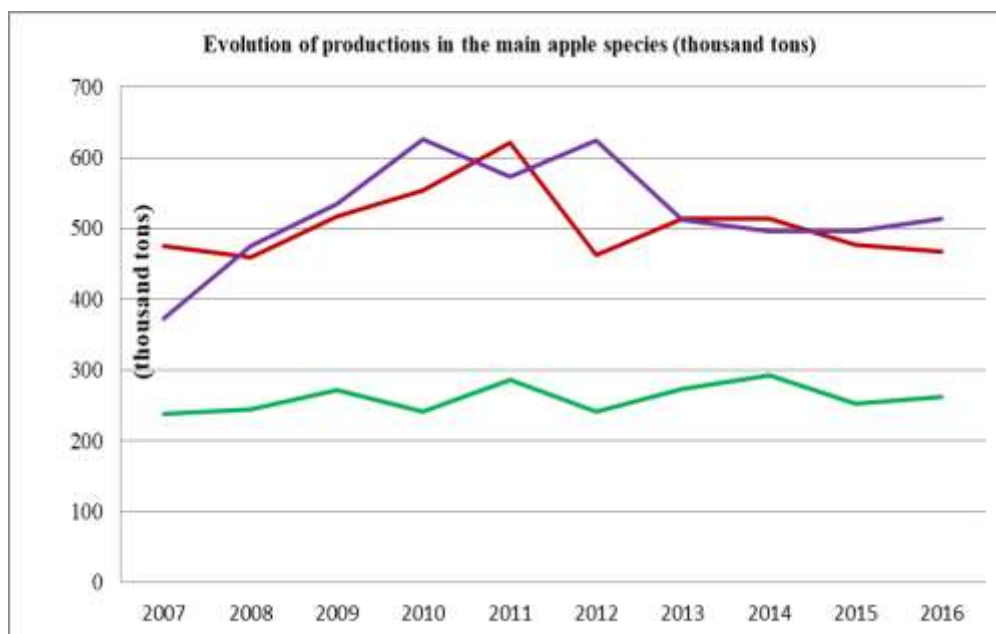


Figure 8. Evolution of the productions at the main fruit-growing crops

Source: <https://www.madr.ro/>, year 2019

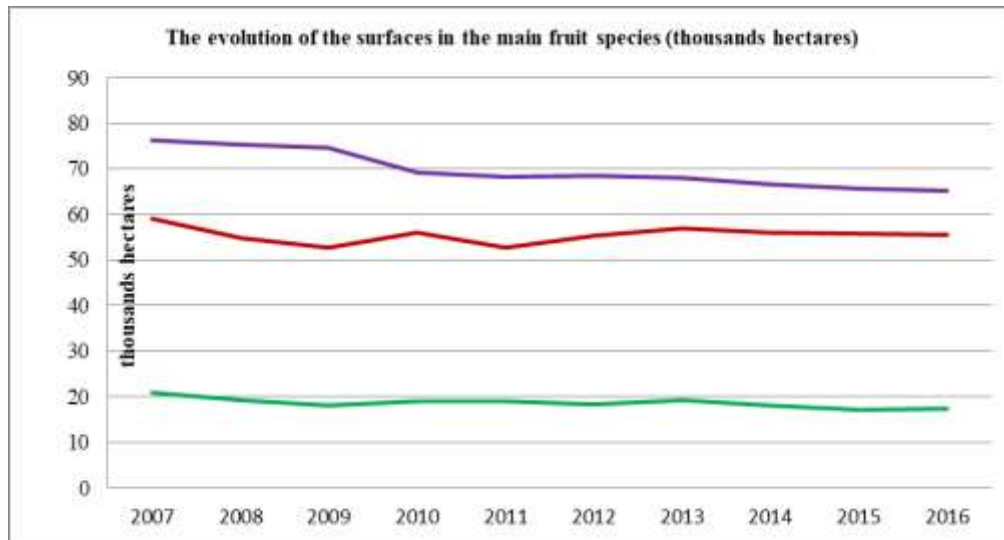


Figure 9. Evolution of crop areas at the main fruit-growing crops

Source: <https://www.madr.ro/>, year 2019

CONCLUSIONS

The accession of Romania to the European Union brought a predictability of the value of the support for agriculture, due to the multiannual financial programming of the European funds, with a positive impact on the increase of the agricultural production and of the income of the farmers. In addition to the European funds, the contribution of the state budget to the support of agriculture has increased significantly, being about one billion euros annually in the first years after accession, so that after 2012 a decreasing trend will follow. Total public funds to support agriculture have grown continuously, exceeding 3 billion euros in each of the last four years, cumulating the support granted in the form of state aid, through the measures of pillar 1 of the CAP (from the European Agricultural Guarantee Fund) and by the measures of pillar 2 of the CAP (from the European Agricultural Fund for Rural Development, to which is added the national contribution).

European funds for agriculture will continue to grow until 2020, which will result in total allocations of European and national funds of approximately 4 billion euros annually. The increase in support for agriculture is due to the increase of direct payments (Pillar 1 of the CAP), which in 2016 were estimated at 1.77 billion euros, and in 2019 at 1.90 billion euros. These allocations are the result of the negotiations under the 2013 CAP reform, and the cumulative amounts for Romania for the period 2015-2020 comprise 10.85 billion euros for direct payments and 8.12 billion euros for the NRDP 2014-2020 payments. The application of the Common Agricultural Policy and especially of the measures in pillar 1 had as a first effect the increase of the incomes of the farms, but at the same time it produced changes in the structural level and of the productive orientation of the farms. Under pillar 1 of the CAP, the farms received substantial funds, in the form of direct payments, including coupled payments, and market measures.

Romania's integration into the EU meant, among others, the commitment to implement development policies designed and designed by the European decision-making bodies: the CAP is one of them. Romania was one of the main beneficiaries of pillar 2 of the CAP, with 8.4 billion euros allocated for 2007-2013 and 8.1 billion euros allocated for 2014-2020.

REFERENCES

- [1]. **FEHER ANDREEA**, 2009, Finanțarea agriculturii și dezvoltării rurale. Politici comunitare, Editura Orizonturi Universitare, Timișoara
- [2]. **GAVRILESCU CAMELIA**, 2017, Romanian international meat trade- post accession evolutions and trends, *Lucrări Științifice Management Agricol, Seria I*, vol. XIX, pp.176-181
- [3]. **HURDUZEU GHEORGHE, KEVORCHIAN CRISTIAN, GAVRILESCU CAMELIA, HURDUZEU RALUCA**, 2014, Hazards and Risks in the Romanian Agriculture Due to Climate Changes, *Procedia Economics and Finance*
- [4]. **LUCA L.** , 2014, Romanian Land Market Regulatory Framework: The Legislative Correction in 2014, *Agricultural Economics and Rural Development Journal*, Vol. 11, Issue 2, pp. 203-212
- [5]. **MATEOC-SÎRB NICOLETA, MĂNESCU CAMELIA**, 2012, Dezvoltare rurală și organizarea teritoriului, Editura Mirton, Timișoara
- [6]. **MĂNESCU CAMELIA MARIA, MATEOC TEODOR, DASCĂLU IONUȚ, MATEOC-SÎRB NICOLETA**, 2017, Labour resources in Romanian agriculture, *Lucrări științifice Management Agricol, Seria I, Vol. XIX (3)*, pp 295-298
- [7]. **CAMELIA MĂNESCU, TEODOR MATEOC, TIBERIU IANCU, ADA-FLAVIA CRISTINA, ALIN POPESCU, NICOLETA MATEOC-SÎRB**, 2015, Research on the influence of regional policy development of rural communitie, *Scientific Papers Series Management, Economic Engineering in Agriculture and Rural Development*, vol. 15(1)
- [8]. **MĂNESCU CAMELIA, CRISTINA ADA-FLAVIA, SICOE-MURG OANA, GAVRUTA ADRIAN, MATEOC TEODOR, TOTH ATTILA, MATEOC-SIRB NICOLETA**, 2016, Analysis of the importance of agriculture sector in Romanian economy , *Scientific Papers-Series Management Economic Engineering in Agriculture and Rural Development*, Vol. 16(1), pp. 271-278
- [9]. **OTIMAN PĂUN ION, MATEOC-SÎRB NICOLETA, MĂNESCU CAMELIA**, 2013, *Economie rurală*, Editura Mirton, Timișoara
- [10]. **OTIMAN PĂUN ION, MATEOC-SÎRB NICOLETA, MĂNESCU CAMELIA, MATEOC TEODOR, GOȘA VASILE, BĂNEȘ ADRIAN**, 2013, A Study of Romania's Territorial Division and Regional Development, *Revista de Cercetare și Intervenție Socială*, Vol. 43, pp. 80-99
- [11]. **STERIU V., OTIMAN P.I.**, 2013, Cadrul strategic national pentru dezvoltarea durabilă a spațiului rural în perioada 2014-2020-2030, Comisia Prezidențială pentru Strategia Agricolă a României, Editura Academiei Române
- [12]. **SWINNEN J., VRANKEN L.**, 2010, Review of the transitional restriction maintained by Bulgaria and Romania with regard to the acquisition of agricultural real estate, report for European Commission, CEPS, Brussels
- [13]. **ȚĂRAU DORINA, MATEOC-SÎRB NICOLETA, MĂNESCU CAMELIA, CÂMPAN CRISTIAN, MATIAȘ CRISTIAN**, 2011, Implementation of rural development projects of the County Office Of Payments For Rural Development And Fishing (COPRDF) from Arad county, *Lucrări Științifice, Management Inginerie Economică în agricultură și Dezvoltare rurală*, vol. 11(3)
- [14]. **VOICILAS D.M., ALBOIU CORNELIA**, 2010, Applied EU quality schemes and organic products on Romanian market, *Economics of Agriculture*, vol. 61, no. 2 (269-552), Belgrade, pp. 381-395
- [15]. ***<http://www.madr.ro/>