

## RESEARCHES CONCERNING THE EVOLUTION OF THE COMMERCIAL EXCHANGES IN TIMIȘ COUNTY

MIROSLAV RAICOV<sup>1</sup>, ANDREA FEHER<sup>1</sup>, TIBERIU IANCU<sup>1</sup>, TABITA ADAMOV<sup>1</sup>  
<sup>1</sup> *Banat's University of Agricultural Sciences and Veterinary Medicine "King Michael I<sup>st</sup> of Romania" from Timisoara, Romania, e-mail: mikiraicov@gmail.com*

*Abstract: The Timiș County is the place where the most important commercial exchanges from the Western region are made. The contribution of the county to the exports of the region represents in 2015, 55.4% totally and 9.5% in the total amount of Romania's exports. On the other hand, the situation of the import operations outlined 55.9% in the total regional imports and 7.1% in the national imports. The competitiveness level, in quantitative terms, of the county economy is outlined by shifting from a negative value to a positive value of the balance of the commercial balance during 2009.*

*Key words: import, export, commercial balance*

### INTRODUCTION

The analysis of the progress of the commercial exchanges at level of Timiș County aims at the analysis of the imports, exports and of the commercial balances for a period of time of ten years (2006-2015), respectively the structure of exports (FOB) and imports (CIF) in the county, on groups of commodities, in 2014.

The exports of goods comprise all the goods that, with onerous title or free of charge, exit from the economic territory of the country going in the rest of the world.

The imports of goods comprise all the goods that, with onerous title or free of charge, enter on the economic territory of the country originating from the rest of the world.

The value of the exported and imported goods is established based on the effective FOB prices for exports and of the effective CIF prices at imports. The FOB price (Free on Board) represents the price at the border of the exporting country that includes the value of the asset, as well as the cost of the transportation and its insurance to the border of the exporting country. The CIF price (Cost, Insurance, Freight) represents the price at the border of the importing country, that comprises both the components of the FOB price, and the costs of insurance and international transportation to the border of the importing country.

The residue of the FOB/CIF commercial balance is calculated based on FOB export value and of CIF import, as difference between them.

### MATERIALS AND METHODS

Main data collection method used in drawing out this works consisted in the **analysis of the documents**. This data collection method stood at the basis of the fundamental research. For that, we appealed to **statistic documents** (statistic directory of Romania, statistic directory of Timis County) and data obtained from the **online Tempo database** of the National Statistics Institute.

After obtaining data, we proceeded to their analysis. According to Miles and Huberman (1994) three stages of the data analysis are distinguished: i) reduction of data—the data are selected, simplified, conceptualized and transformed; ii) presentation of data—in this stage, the information is assembled in more accessible and more compact forms in order to see easier what happens; iii) elaboration and checking – up of conclusions.

**RESEARCH RESULTS**

The most important commercial exchanges from the Western Region are operated in Timiș County. The county contribution in the exports of the region represents in 2015, 55.4% totally and 9.5% in the total exports of Romania. On the other party, the situation of the import operations outlines a value of 55.9% in the total regional imports and 7.1% in the national imports.

**Table 1**

**Volume of exports, imports and residue of the commercial balance in Romania, Western Region and Timis County, year 2015, thousand EURO**

NUTS REGION	FOB Exports	CIF Imports	Residue of the commercial balance
Romania	54,598,298	62,967,682	-8,369,384
West Region	9,390,899	7,962,806	1,428,093
Timiș County	5,206,775	4,455,046	751,729

Source: Drawn out based on INS, Tempo online

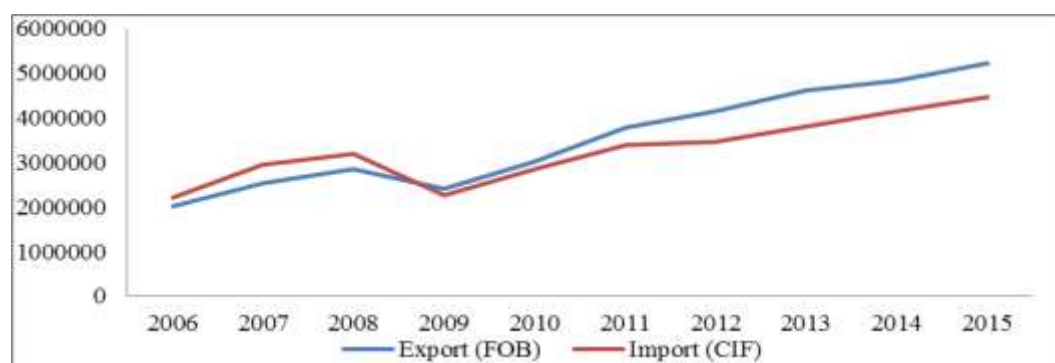
The residue of the commercial balance in Timis in 2015 represented at regional level, an important part of 53%, and records positive values compensating the national deficit.

**Table 2**

**Evolution of the operations of import, export and residues of the commercial balance at the level of Timiș County, period 2006-2015, thousand EURO**

	2006	2007	2008	2009	2010	2011	2012	2013	2014	2015
Exports (FOB)	2025732	2538395	2850065	2403135	3016326	3778761	4133380	4607148	4829185	5206775
Imports (CIF)	2209780	2948668	3187598	2263398	2854472	3377138	3449514	3789388	4147761	4455046
<b>Balance</b>	<b>-184048</b>	<b>-410273</b>	<b>-337533</b>	<b>139737</b>	<b>161854</b>	<b>401623</b>	<b>683866</b>	<b>817760</b>	<b>681424</b>	<b>751729</b>

Source: Drawn out based on INS, Tempo online



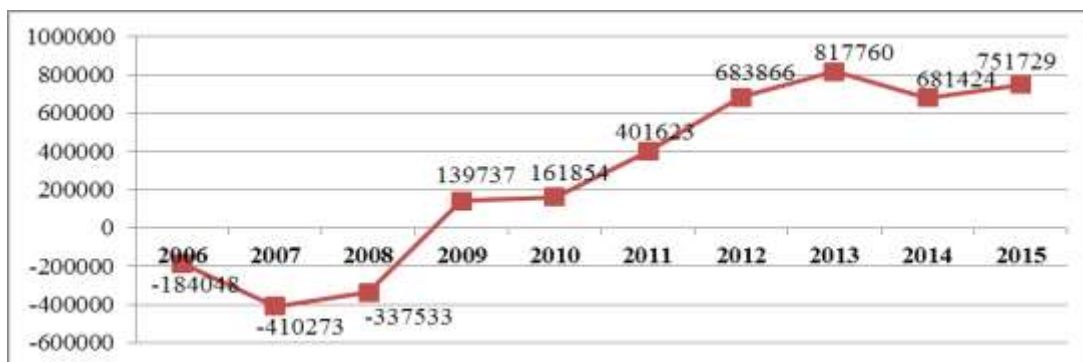
**Figure 1. Evolution of the import – export operations in Timiș County, period 2006-2015, thousand Euro**

In the evolution of the import-export operations, in the period 2006-2015, two trends are outlined:

- Period of decrease 2008-2009 due to the financial crisis, returning in 2011 at a level higher than the top of 2008;
- The benefit brought to the economy of the county by the “opportunity” of the crisis for reversing the commercial deficit with a positive residue of the commercial balance.

The competitiveness level of the county economy, under quantitative aspect, is outlined by shifting from a negative value to a positive value of the commercial balance during 2009.

In absolute figures, the import values reached in 2015 to the amount of Euro 4.455.046 thousand, with a dynamics (increase rate) of 101.6% compared to the year 2006, and the exports reached a value of Euro 5,206,775 thousand and a dynamics of 157% in 2015 compared to 2006.



**Figure 2. The residue of the commercial balance Timiș County, 2006-2015, thousand Euro**

In the analysis of the residue of the county commercial balance, the first remark is shifting from a negative balance to a positive balance in 2009, and maintaining the positive residue in the following years, with smaller or bigger fluctuations from a period to another. In the period 2006-2007 we assisted to an accentuated decrease of the residue of the commercial balance, followed by an increase between 2007-2009, stagnation in 2009-2010, then accentuated increase until 2013, falling in 2014 and getting back in 2015 but on a level lower than the top of 2013.

**Table 3**  
**Value amount and structure of exports (FOB) and imports (CIF) in Timiș County, by groups of commodities, year 2014**

Group of commodities	Export (FOB) thous. Euro	Import (CIF) thous. Euro	Structure of exports, %	Structure of imports, %
live animals and animal products	75013	40414	1,55	0,97
Vegetal products	74624	44728	1,55	1,08
Fats and animal or vegetal oils	5778	6568	0,12	0,16
Foods, beverages, tobacco	21250	40706	0,44	0,98
Mineral products	3769	27386	0,08	0,66
Chemical products	102771	296518	2,13	7,15
Plastic materials, rubber	686431	513647	14,21	12,38
Crude leather, tanning leather, furs	22825	102112	0,47	2,46
Wood products, exclusive furniture	47232	13845	0,98	0,33
Paper and items made of paper	26501	66084	0,55	1,59
Textiles and fabric articles	148407	230175	3,07	5,55
Footwear, hats, umbrellas and similar items	343351	127698	7,11	3,08
Stone, gypsum, cement, ceramic products, glass products	33718	23607	0,70	0,57
Ordinary metals and ordinary metal products	94933	370357	1,97	8,93
Machines and apparatus, electronic equipment	2111170	1788416	43,72	43,12

Transportation means	477793	218011	9,89	5,26
Instruments and optical apparatus, photographic , cinematographic devices	307099	125684	6,36	3,03
Commodities and various products	229997	99253	4,76	2,39
Goods not comprised in other sections	16525	12552	0,34	0,30
<b>Total county</b>	<b>4829185</b>	<b>4147761</b>	<b>100,00</b>	<b>100,00</b>

Source: Processing after INS, Timis Regional Directorate of Statistic, statistic directory of the Timiș County for 2014, 2016

The structure of imports by groups of commodities, but also of the exports (Table 3), is focusing mainly on the same types of commodities as concerns the most active fields considering the relations of commercial exchange.

The main groups of commodities, both for import, and for export are those of machines, apparatus, and electric equipment with a weight of 43.12% in total imports and 43.72% in total exports and group of plastic materials, rubber and other materials, with a weigh of 12.38% in imports and 14.21% in exports.

In the structure of imports, besides the two groups already mentioned, there are distinguished with a more important weight, the ordinary metal products and similar items (8.93%), as well as the chemical products (7.15%).

## CONCLUSIONS

From the analysis of the commercial exchanges of Timis County, it is outlined the high weight of the sectors of the automotive construction industry, components, electric equipment and automotive accessories, commodities with a big added value and that support the county's development potential. Imports from the same category are made for bring components or for increasing the modernization of the current production capacities, which is constituted as a positive trend for development of cross border economic relations of the county.

## ACKNOWLEDGEMENTS

This work was supported by a grant of the Romanian National Authority for Scientific Research and Innovation, CNCS - UEFISCDI, project number PN-II-RU-TE-2014-4-1134.

## REFERENCES

1. GOȘA, V., FEHER, ANDREA, RAICOV, M., GOȘA, C., 2013, Income collection – big problem of Romanian's budget, *Lucrări științifice Management Agricol, Seria I*, vol. XV(3), pp. 82-87, ISSN: 1453-1410
2. GOȘA, V., FEHER, ANDREA, RAICOV, M., GOȘA, C., 2013, Considerations concerning the European fiscal pact, *Lucrări științifice Management Agricol, Seria I*, vol. XV(3), pp. 74-81, ISSN: 1453-1410
3. National Institute of Statistics, Tempo online databases, Foreign trade section <http://statistici.insse.ro/shop/index.jsp?page=tempo2&lang=ro&context=62>
4. National Institute of Statistics, 2016, Romanian statistical yearbook 2015
5. National Institute of Statistics, Regional Department of Statistics Timiș, 2016, Statistical yearbook of Timiș county 2014
6. <http://epp.eurostat.ec.europa.eu> – online support EUROSTAT